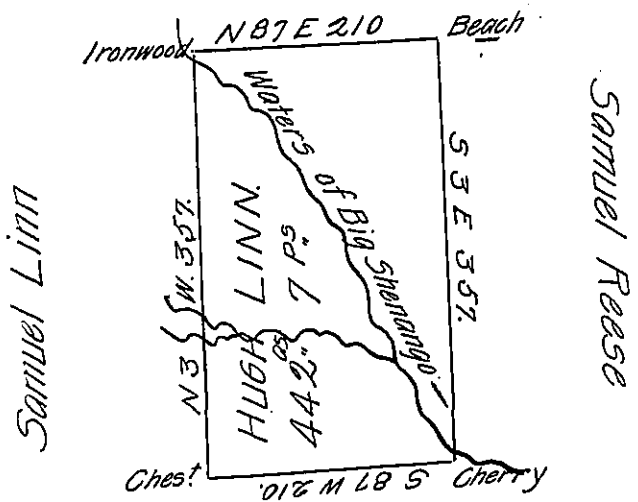


Hugh Linn

Paul Metz



Samuel Linn

Samuel Reese

George Martin

Surveyed the above the 28th of April 1819 on a Warrant in the name of Hugh Linn dated the 21st of April 1794. by order of the Board of Property directing the same to be resurveyed agreeably to the lines run by John Walker in lieu of those run by Benjn^r Stokeley late Deputy Surveyor said tract lays in West Salem township Mercer County + Order dated the 20th Feb^y 1817. Allen Dunn D.S.

IN TESTIMONY that the above is a copy of the original remaining on file in the Department of Internal Affairs of Pennsylvania, made conformably to an Act of Assembly approved the 16th day of February, 1833, I have hereunto set my Hand and caused the Seal of said Department to be affixed at Harrisburg, this Seventeenth day of August 1905.

Loac R. Brown
Secretary of Internal Affairs.